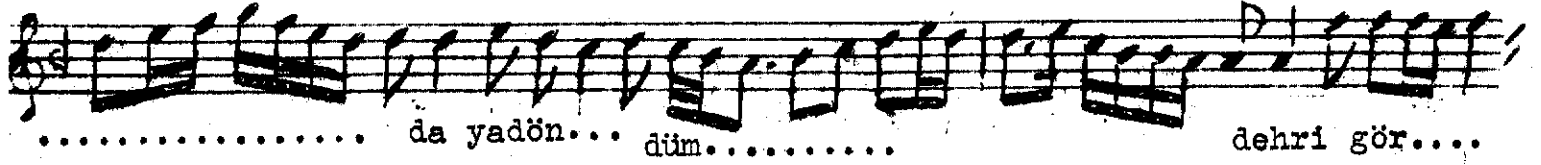


Bül bü lû şey.....



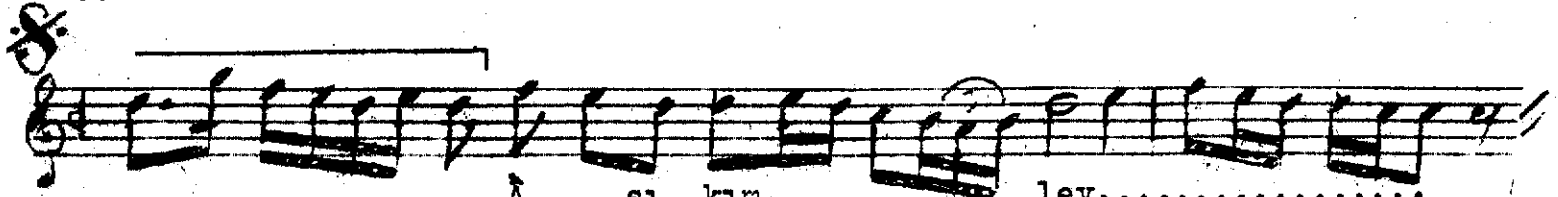
..... da yadön... düm.....

dehri gör....

Saz



.. mez..... göz..... le rim



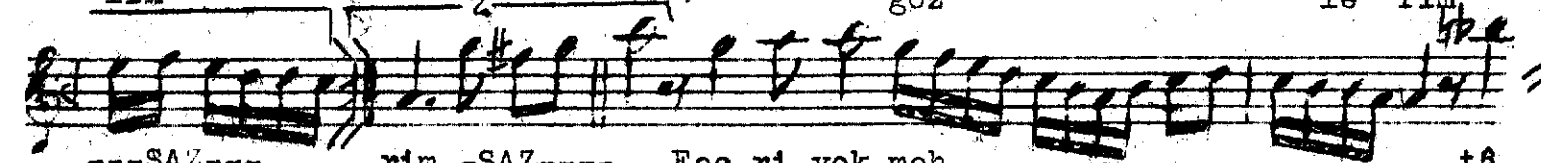
Â şı kim..... ley.....  
Lût fet ar tık



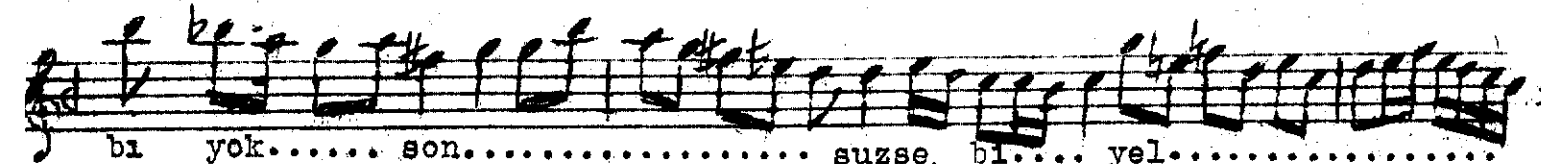
lâ mı gur..... bet..... el de her....  
a fi tâ bım bence mâ



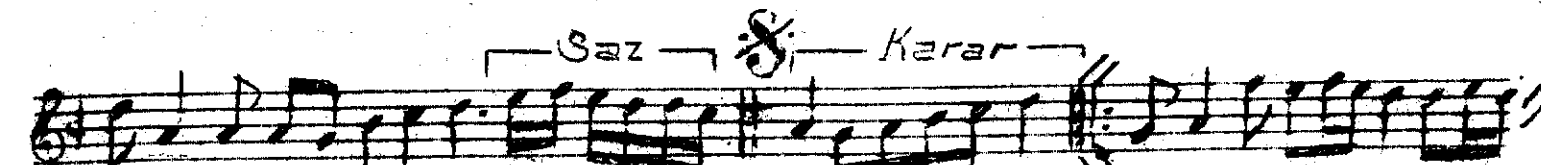
dem..... göz..... le rim  
lin le rim



---SAZ--- rim -SAZ--- Fec ri yok.meh..... tâ



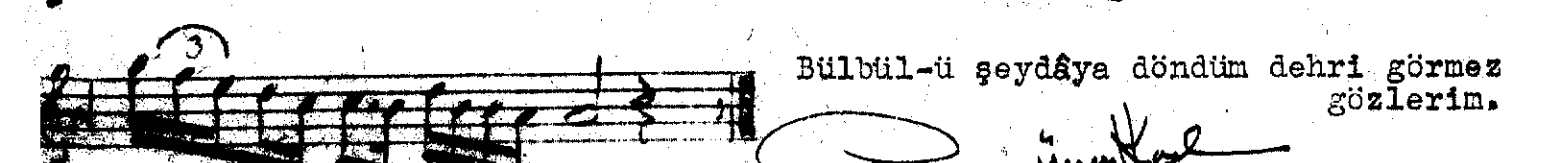
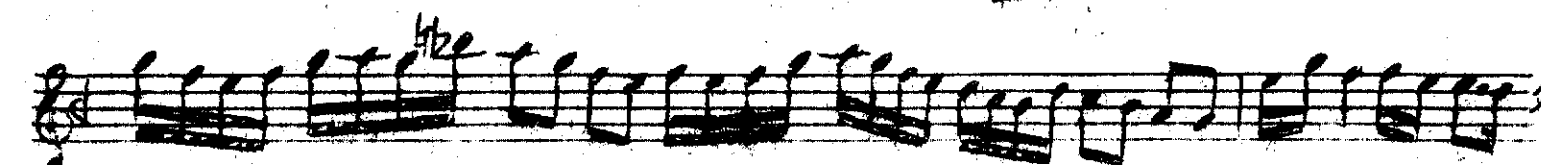
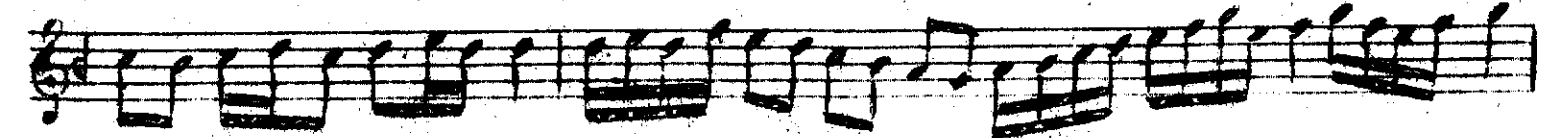
bı yok..... son..... suzşe. bi.... yel.....



....da..... dayım

rim

---ARANAĞME---



Bülbül-ü şeydâya döndüm dehri görmez  
gözlerim.

*İsmail Kaya*